

COLOMA TOWNSHIP PARK DISTRICT CENTENNIAL PARK



Project Description

CLIENT: Coloma Township Park District
Mr. Michael Sterba / Director
815.625.0272

LOCATION: Rock Falls, Illinois

COMPLETED: On-Going Services

DESCRIPTION: Over the years Wendler has completed several projects with a wide range of services

The 50 acre park is the largest and most developed of all the Rock Falls parks. Features of the park included; a boating area for the rental of paddleboats and canoes, six outdoor tennis courts, several sponsored shelters, three softball diamonds, a fenced in playground area, and an outdoor field area.

The park also contains several footbridges that connect the Illinois Mississippi Feeder Canal to the park, as well as eight acres of property set aside for future development.

Wendler has assisted the Coloma Township Park District in designing baseball fields, shelters, memorial areas, parking lots, etc. for Centennial Park in conjunction with multiple grants programs.

Services Provided

SITE SURVEY

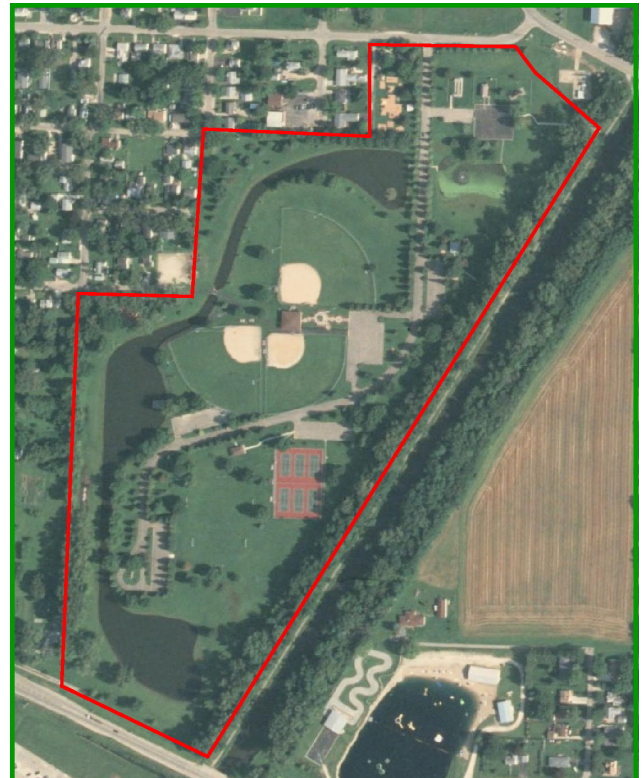
CIVIL ENGINEERING

STRUCTURAL ENGINEERING

CONTRACT DOCUMENTS

CONSTRUCTION OBSERVATION

PROJECT CLOSEOUT



wendler
wendler engineering services, inc.
GROUNDBREAKING SOLUTIONS
engineers · surveyors · scientists
www.wendlergs.com 815.288.2261

ENGINEERS

SURVEYORS

SCIENTISTS