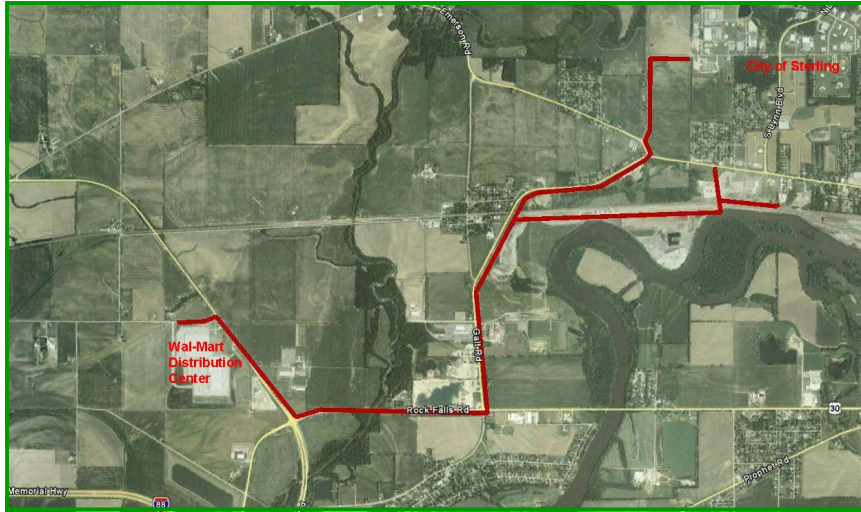


WATER & SEWER EXTENSION

STERLING, ILLINOIS



Services Provided

LAND PLANNING

LAND SURVEYING

CIVIL ENGINEERING

CONSTRUCTION STAKING

CONSTRUCTION OBSERVATION

Project Description

CLIENT: Whiteside County

LOCATION: Sterling, Illinois

PROJECT COST: \$1,717,549 San— \$ 1,634,393 Watermain

COMPLETED: 2005

DESCRIPTION: This project included a 4.25 Miles of sanitary sewer collection system that involved 10,720 feet of gravity collection sewer and 11,860 feet of sanitary forcemain. The area served by this project included approximately 550 residences, 1,464 acres of industrial property and 145 acres of business property. Full agency coordination and permitting thru the I.E.P.A., I.D.N.R., Illinois Historic Preservation Agency, U.S. Army Corps of Engineers, the Illinois Department of Commerce and Economic Opportunity was required, the Burlington Northern Railroad and the State of Illinois Department of Transportation. Borings were required to push the sewer main under the railroad tracks at Elkhorn Creek.

The project also included 4.84 mi. of 16" watermain. Of which approximately 2000' were directional bored around a highway curve to stay within the right-of-way and eliminate open excavations



wendler
wendler engineering services, inc.
GROUNDBREAKING SOLUTIONS
engineers · surveyors · scientists
www.wendlergs.com 815.288.2261

ENGINEERS

SURVEYORS

SCIENTISTS